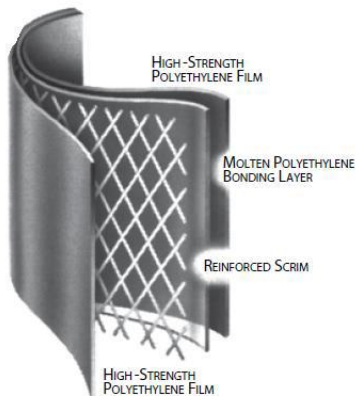
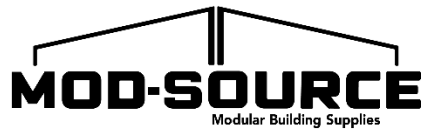


## Close-up / Mod-Wrap Installation Guide

### Key Characteristics:

- Size of the new roll of plastic is 14'x65' and weight is 38 lbs per roll
- For units up to 64' in length (60' box)
- 8-mil reinforced plastic with UV protection a film designed for applications requiring shred/high tear resistant strength.
- Is more expensive (2X)
- Is reusable!
- Comes with a 5-year warranty
- New 2" tape with better adhesive characteristics and for all types of weather





## What you need to Install our Mod-Wrap:

### Safety/PPE:

Safety Harness

A6 Cut/Impact Gloves

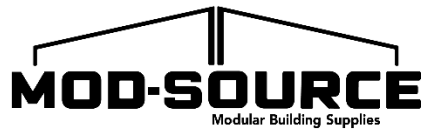
Knee Pads

Safety Boots

Safety Glasses

### Tools and Material:

- 1"x2"x8'
- Mod-Wrap (roll of plastic) – Mod-Source Part # MW8BW – 25 – Standard pack of 25 rolls per pallet
- Super Tape – ST35-50 – Peel and stick 50' roll
- 1/4"x4" FNL T30-6 Lobe Round Washer Head Multi-Purpose Structural Screw – Fastenal Part #11574219
- 1/4"x2 1/2" FNL T30-6 Lobe Round Washer Head Multi-Purpose Structural Screw – Fastenal Part #11574215
- 1/4" Galvanized Sealing Washers – Fastenal Part # 33155
- Zippers – MWZ-7-2pk – Peel and Stick Zipper 7' – 2 per pack
- Cordless Drill
- Scissors
- T-30 Lobe x 1-15/16" OAL 1/4" Hex Rock River Standard Power Bit – Fastenal Part # 61508

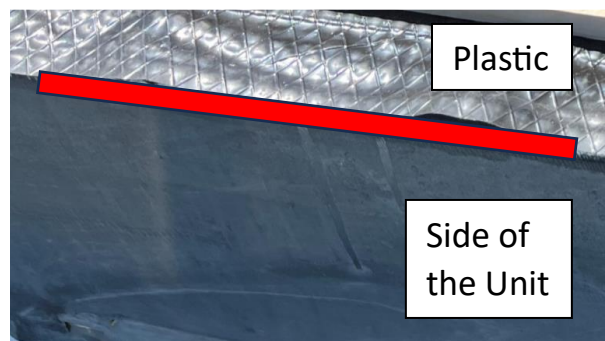


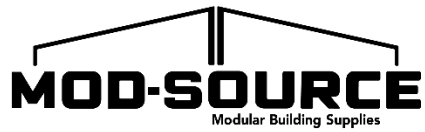
## Step 1: Securing Roof Line

- Unfold the plastic so that the black side is up (facing you) and align the polyethylene with the edge of the roof. When you have finished unrolling the plastic make sure to leave no more than 12” of the plastic on the hitch side and the remaining one on the back of the unit. This will prevent air from getting into the unit during transport.

\*For best results, make sure the unit is level while installation is happening.

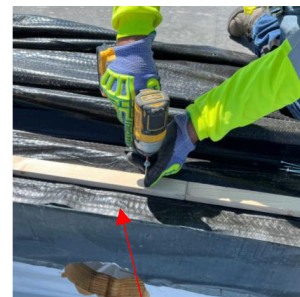
\*Before starting the installation, inspect the plastic and make sure it is free of contaminants Ex. Mold.



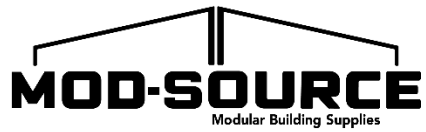


## Step 1 (Cont.): Securing Roof Line

- Before you secure the plastic make sure the black side is facing the installer. Place the 1"x2"x8' on top of the plastic and about 3" from the edge of the roof and with any holes from a previous installation away from the installer. Secure the 1"x2"x8' to the roof using 1/4"x4" screws and 1/4" galvanized sealing washers and 24" apart.



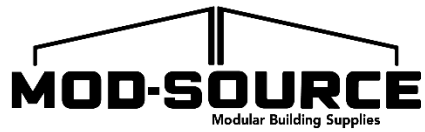
3" gap from the edge of the roof



## Step 1 (Cont.): Securing Roof Line

- After the roll of plastic is secure to the roof, let it fall along the side of the unit being protected with the white side facing out and all 1"x2"x8' and screws covered.

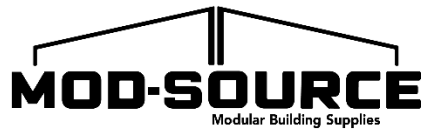




## Step 2: Secure Plastic to the Bottom of the Unit

- Starting from the middle of the unit and using the 1"x2"x8' as your guide and right at the floor joist level, mark in the plastic the height and length of the area you want to cut. Proceed to cut the plastic with scissors in the area marked, always below the floor joist. Avoid staggering the 1"x2"x8' installation, start from the center of the unit and work your way to the side. It makes the wrapping process simpler and more effective.

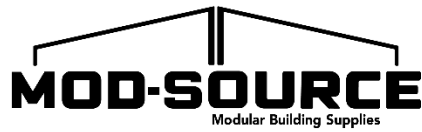




## Step 2 (Cont.): Secure Plastic to the Bottom of the Unit

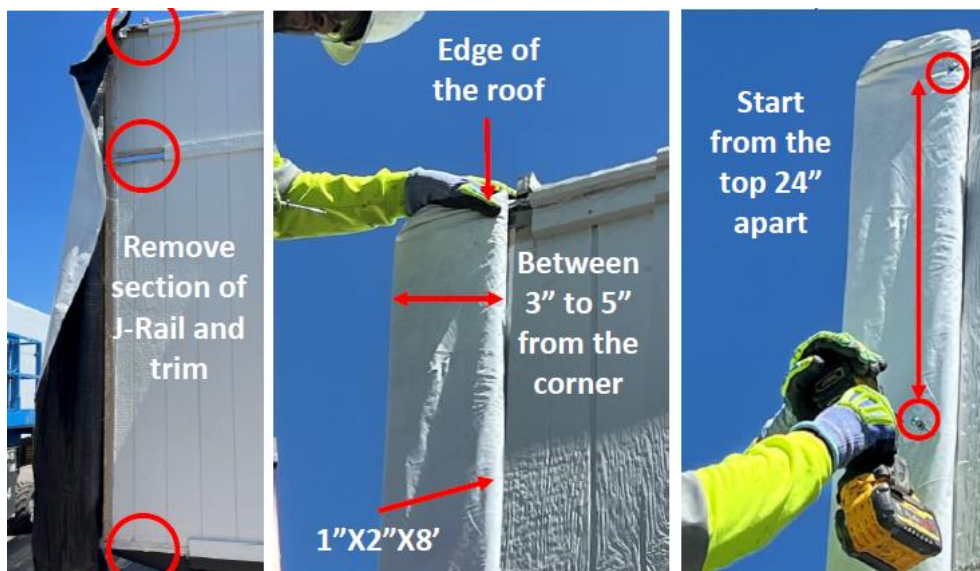
- With a 1"x2"x8' secure the plastic to bottom of the unit by using 1/4"x4" round washer head screws and 1/4" galvanized sealing washers 24" apart. Plastic must be wrapped inward to avoid the accumulation of water and possibly floor joist rot to the unit. For clear span building use 1/4"x2 1/2" round washer head screws and 1/4" galvanized sealing washers 24" apart to secure plastic to the bottom and the sides of unit.



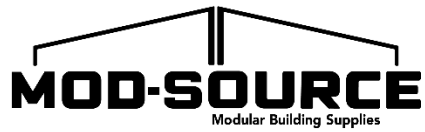


### Step 3: Secure plastic to both sides of the unit

- Remove a section of the J-Rail and trim from the side of the unit you are ready to close up. Take a 1"x2"x8' and wrap the plastic inward between 3" and 5" from the side corner and come up as close as possible to J-Rail and trim. Once you wrap the plastic secure the 1"x2"x8' by using 1/4"x4" round washer head screws fasteners and 1/4" galvanized sealing washers 24" apart. First screw should be as high as the location of the J-Rail to avoid creating air pockets and water accumulation. Continue your way down by installing a screw 24" apart.

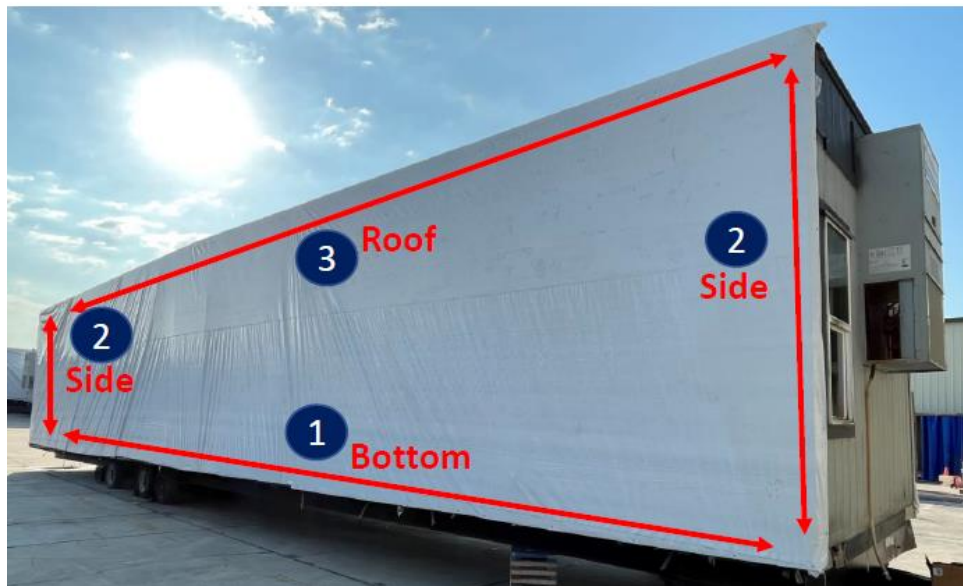


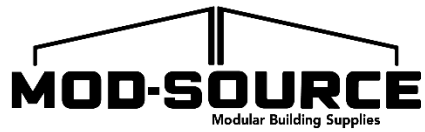




#### Step 4: Remove plastic from the unit and folded for the next unit

- When removing the plastic, start by removing the screws and the 1"x2"x8' from the bottom of the unit, continuing with the sides and finally the roof section (see picture below). Save all screws for next installation guide.

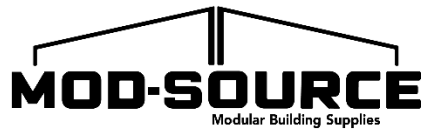




#### Step 4 (Cont.): Remove plastic from the unit and folded for the next unit

- Once you have removed the plastic from the unit, proceed to fold the plastic. Make sure the black side is up.
- Fold the plastic in half leaving 6" of the edge uncovered. Repeat the process three times before you roll up the plastic. Once the roll is completely folded, write the box size of the unit the roll came from.



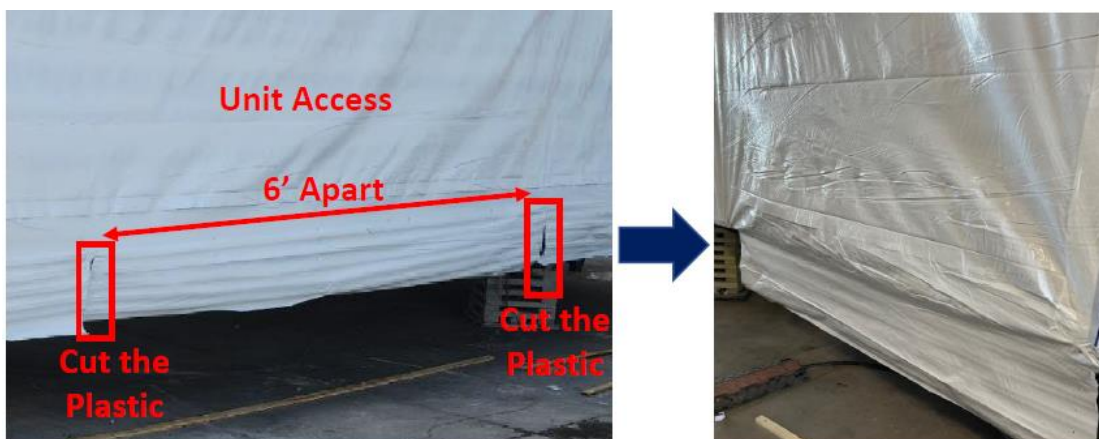


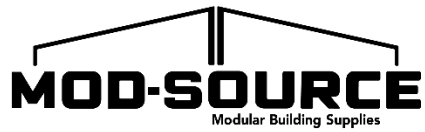
## Unit Access and Zipper Installation

If you determine that the existing plastic is in good condition, and you need to access the interior of the unit:

- Use the existing door(s) of the unit available
- If you need to access the unit by cutting the plastic, close the unit using the recommended zipper procedure.

Once you have identified the correct place to access the unit, proceed to cut a section of the plastic 6' apart and below the floor joist. This is only needed for this section to accommodate the width of the platform.





## Unit Access and Zipper Installation

Install two zippers, one on either side of the access door and cover with close up tape (Super Tape ST35) on both sides of the zipper. If you see a need to cover the zipper section, use regular white tape (Old tape only).



After you have finished with the repairs or loading VAPS and have no need to access the unit, proceed to secure with a 1"x2"x6' the plastic to the bottom of the unit by using  $\frac{1}{4}$ "x4" round washer head screws and  $\frac{1}{4}$ " galvanized sealing washers 24" apart. Plastic must be wrapped inward to avoid the accumulation of water and possibly floor joist rot to the unit. For clear span building use  $\frac{1}{4}$ "x2 $\frac{1}{2}$ " round washer head screws and  $\frac{1}{4}$ " galvanized sealing washers to secure plastic to the bottom and the sides of the unit